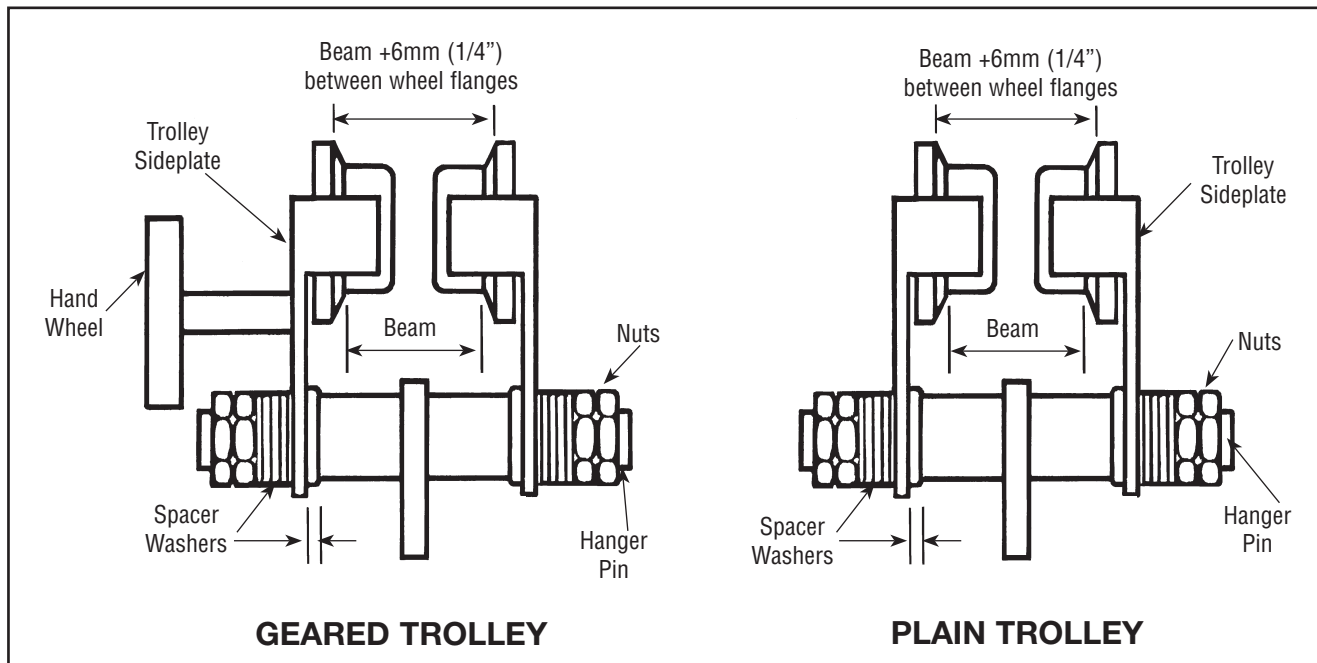


Or Blok GIRDER TROLLEY

ASSEMBLY INSTRUCTIONS



BECAUSE OF VARIATIONS IN BEAM WIDTHS, THE TROLLEY IS SUPPLIED WITH HANGER PIN AND SPACER WASHERS PACKED SEPARATELY.

ASSEMBLE AS FOLLOWS

1. Measure the actual width of the Runway Beam.
2. Assemble the required number of Spacer Washers equally to the inside of the Trolley Side Plates so that the dimension between Trolley Wheel Flanges is 6mm or 1/4" (Max) greater than the Runway Beam width. Assemble the remaining washers outside the Trolley Sideplate and fit Nuts to hanger Pin. THERE MUST ALWAYS BE AT LEAST ONE WASHER ON THE INSIDE AND THE OUTSIDE OF EACH TROLLEY SIDE PLATE (see diagram).
3. Slacken off the Hanger Pin Nuts and spread the Side Plates so that the wheels can be slipped up over the Runway Beam. Screw the Nuts firmly against the Washers, then suspend a light load from the Trolley to ensure that all four Wheels contact the Runway Beam. Screw the Nuts tightly against the Washers then secure with Locknuts.

NUTS MUST BE TIGHT

4. Geared Trolley when assembled at the minimum beam width will require Hanger Pin to be offset, so it will not foul the Handwheel.
5. Suspend the Maximum Safe Working Load for the Trolley then run the unit slowly along the full length of the Runway to ensure satisfactory operation.

Capacity	0.5t	1t	2t	3t	5t	10t	20t
Beam Range Standard (mm)	64 - 152	64 - 210	89 - 210	102 - 305	108 - 305	125 - 307	210 - 330

OPERATOR'S MANUAL

HAND CHAIN HOIST 0.5 TONNE THROUGH 30 TONNE



These Hand Chain
Hoists meet or exceed
the following
standards:

CE

AS1418.2

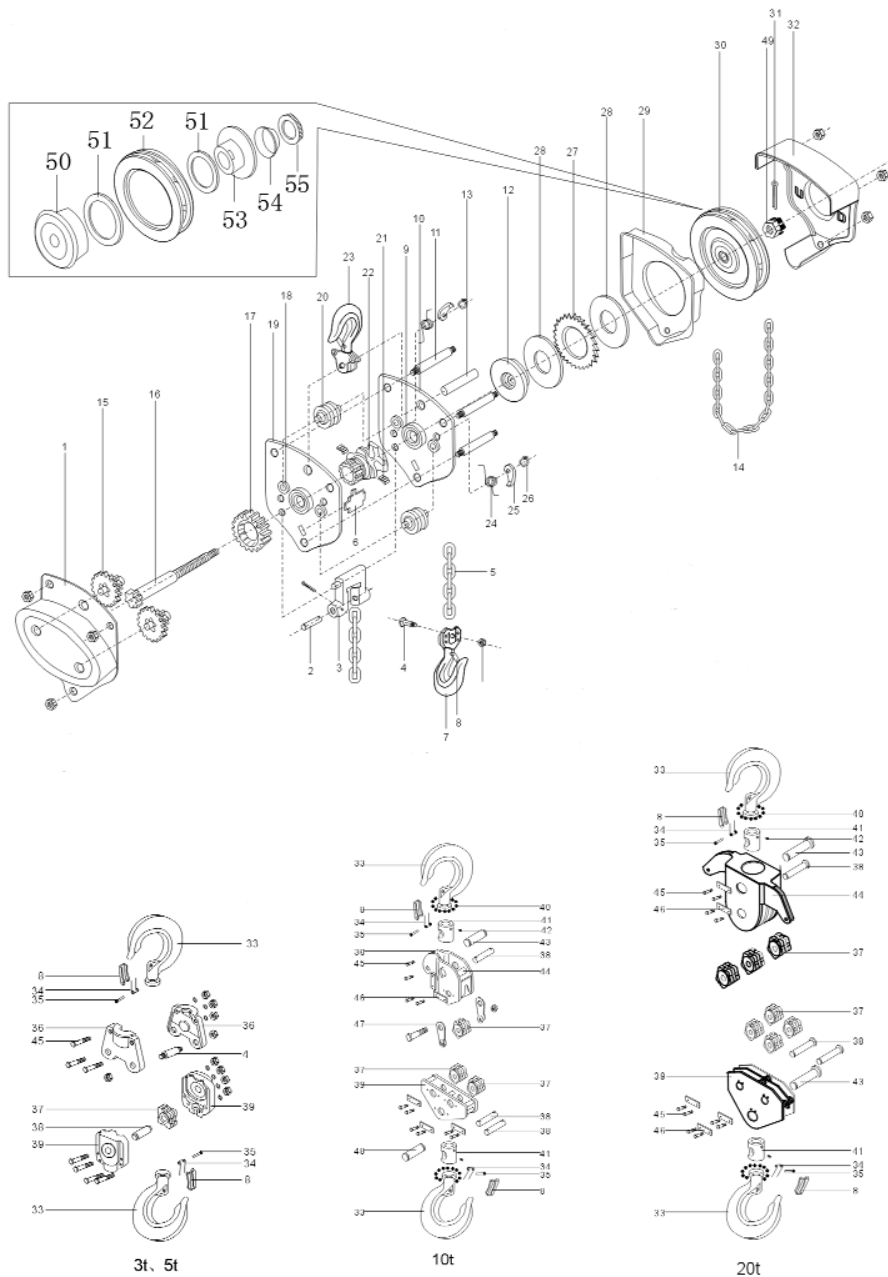
ANSI B30.21

ANSI B30.16

Orblok

This Manual covers -
Red Hoists without Overload Protection
and Yellow Hoists with Overload Protection.

SPARE PARTS (0.5 Tonne - 20 Tonne)



ONE YEAR LIMITED WARRANTY

OzBlok products are guaranteed to be free of defects in materials and workmanship. If one of these products fails during the first year of operation due to defective materials or workmanship it will be repaired or replaced at our discretion. Normal wear and tear of moving parts is excluded from this guarantee. This guarantee does not apply to any product showing signs of misuse, overloading, alteration or improper maintenance.

WARRANTY POLICY

Any product for which there is a warranty claim must be returned prepaid to an authorized **OzBlok** warranty depot along with proof of purchase.

For information on **OzBlok** products, please contact your local distributor:

**HOISTING
EQUIPMENT
SPECIALISTS PTY. LTD.**



31 Mangrove Lane
Taren Point NSW 2229
Phone: (02) 9531 8033
Fax: (02) 9531 7933
Web: www.ozblok.com.au
Email: sales@ozblok.com.au

SAFETY INFORMATION

It is the responsibility of the owner/user to install, inspect, test, maintain, and operate these products in accordance with AS1418.2 standards.

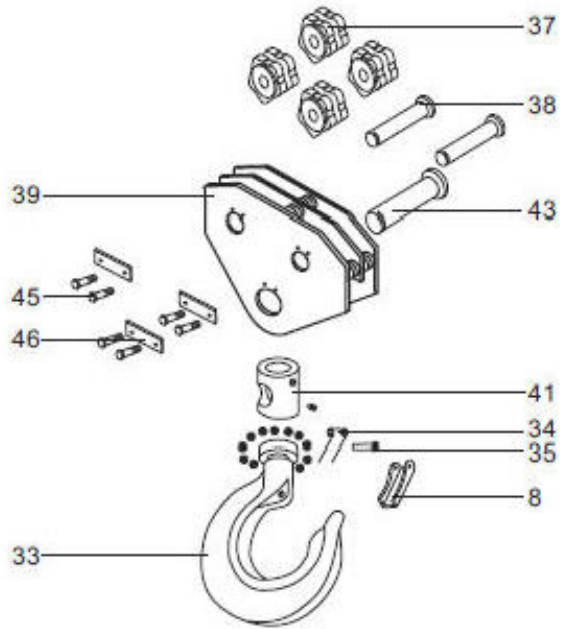
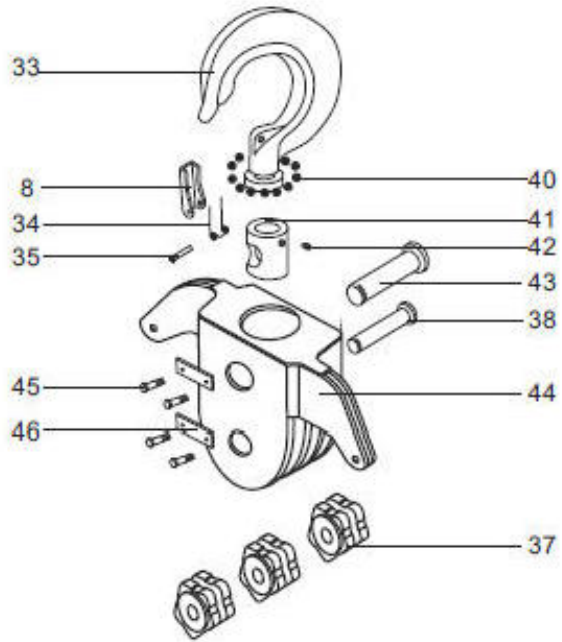
These general instructions deal with the normal installation, operation and maintenance situations encountered with the products described herein.

This product should not be installed, operated or maintained by any person who has not read all the contents of these instructions. Failure to read and comply with these instructions or any of the warnings or limitations noted herein can result in serious bodily injury or death, and/or property damage.

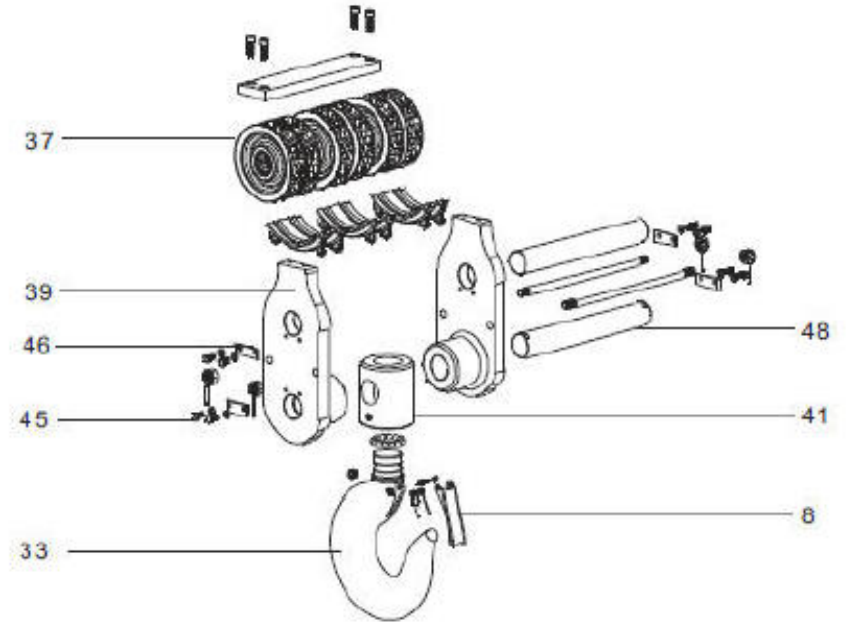
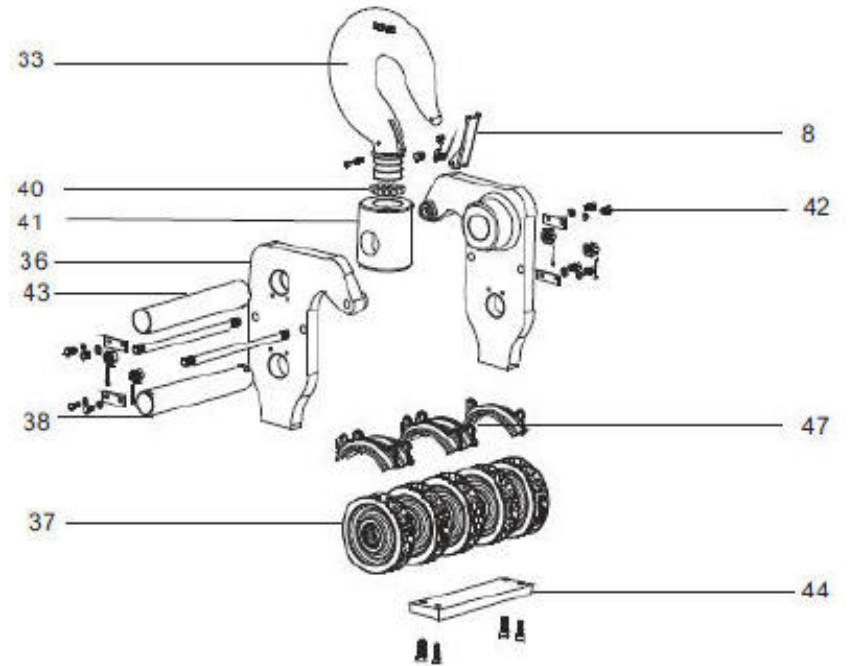
Only trained and qualified personnel shall operate and maintain this equipment.

Equipment described herein is not designed for, and should not be used for lifting, supporting or transporting people.

Modifications to up-grade, re-rate or otherwise alter these products can only be authorized by the manufacturer.



20t



30t

PRE-INSTALLATION INSTRUCTIONS

Check for damage during shipment. DO NOT install or use a damaged product. Check and verify any structure or other equipment that will support the product has a rated load capacity equal to or greater than the rated load capacity of the product to be used.

OPERATION

Before initial operation:

1. Read and comply with all instructions and warnings furnished with or attached to the product if applicable.
2. Check lubricant.
3. Check operation of brake.
4. Where applicable, check that chain is properly seated in sheaves and that chain is not twisted, kinked or damaged.

Before each shift, where applicable:

1. Inspect hooks for nicks, gouges, cracks, and signs of pulling apart or twisting.
2. Inspect hook latch for proper operation.
3. Check chain for kinks or twists.
4. Check operation of brake.
5. Replace warning label if missing or illegible.

Before operating:

1. Be certain all personnel are clear of the load to be lifted and moved.
2. Make sure load will clear stock piles, machinery, or other obstructions when hoisting and travelling the load.

SAFETY PRECAUTIONS

- READ** these instructions and relevant Australian Standard - AS1418.2 before installing, operating, or maintaining this equipment.
- WARN** personnel of approaching loads.

SPARE PARTS LIST

Fig. No.	Description
1	Bent plate
2	End anchor pin
3	End anchor
4	Chain pin
5	Load chain
6	Stripper
7	Bottom hook assembly
8	Safe clip
9	Bearing race
10	Left side plate
11	Stay
12	Brake seat
13	Hook pin
14	Hand chain
15	Disk gear
16	Driving shaft
17	Splined gear
18	Steel bushing
19	Right side plate
20	Guide roller
21	Roller
22	Load sheave
23	Top hook assembly
24	Double-spring
25	Pawl
26	Spring ring
27	Ratchet disk
28	Friction plate

Fig. No.	Description
29	Brake cover
30	Overload limiter assembly
31	Cotter pin
32	Hand wheel cover
33	Hook
34	Spring
35	Rivet
36	Top hook frame
37	Move wheel
38	Move wheel pin
39	Bottom hook frame
40	Row
41	Hook frame bar
42	Lock screw
43	Top hook pin
44	Bunton
45	Screw
46	Stripper
47	Sling plate
48	Bottom hook pin
49	Castle nut
50	Block 1
51	Friction disc of overload
52	Chain wheel
53	Block 2
54	Disc spring
55	Lock nut

CHAIN

Inspect chain before each use. Between regular inspections, check visually daily for nicks, gouges, weld splatter, corrosion, or distorted links. Inspect chain thoroughly if it does not feed smoothly over load sheaves. Inspect as follows.

1. Clean chain before inspection.
2. Test hoist with load and observe operation of chain over load sheaves.
3. Slacken chain and inspect contact points for excessive wear. Refer to Figure 2.



Figure 2

OVERLOAD PROTECTION

If you have purchased an **OzBlok** Hand Chain Hoist fitted with overload protection, the following information should be read in conjunction with all other information contained in this Operator's Manual:

- The "LOAD-SAFE" overload protection consists of the components shown as sub-parts of part #30 in the exploded view of the product.
- The overload protection is calibrated at the time of manufacture and should not require re-calibration if the hoist is used as intended.
- The overload clutch can be re-calibrated using factory supplied tools available only to **OzBlok** repair agents.
- In the unlikely event of the overload clutch being damaged, complete replacement kits are available. Individual clutch components are **NOT** available.

C. DO NOT, WHERE APPLICABLE:

1. Lift more the rated load.
2. Operate the product when it is restricted from forming a straight line with the direction of loading.
3. Operate with twisted, kinked or damaged chain.
4. Operate if chain is not seated in sheaves or sprockets.
5. Wrap chain around load or use chain as a sling.
6. Operate unless load is properly applied to the saddle or bowl of the hook.
7. Operate if load is applied to the tip of the hook.
8. Operate with damaged or missing hook latches.
9. Lift people or lift loads over people.
10. Operate with side-pulling or side-loading of load to hoist.
11. Operate a damaged or malfunctioning product.
12. Operate with other than hand power.
13. Remove, deface, or obscure warning label or labels.
14. Leave load suspended if unattended, unless specific precautions have been instituted.
15. Lengthen load chain or repair damaged load chain by welding.
16. Use chain as a ground for welding.

INSPECTION AND MAINTENANCE

Prior to initial use, all new, modified and repaired products shall be inspected in accordance with Table 1. Thereafter, items to be inspected are indicated in Table 1 by F (Frequent) or P (Periodic).

Frequent Inspections - Visual inspection by the operator or other authorized person. This inspection includes listening for unusual sounds while the product is operated that may indicate deficiencies.

Periodic Inspections - Audible-visual inspection as for Frequent Inspections, with some disassembly to allow a more detailed inspection if external conditions indicate the need.

Exception: Brakes require more than audible-visual inspection. Check daily by operating the product with and without load, stopping at various positions to ensure safe operation.

TABLE 1 - INSPECTION CHART

In chart, F indicates Frequent Inspection, P indicates Periodic Inspection

LOCATION		CHECK FOR	F	P
Braking mechanism		Slipping under load	✓	
		Hard to release	✓	
Brake parts:	Brake Discs	Glazing		✓
		Oil contamination		✓
	Pawl: Ratchet	Excessive wear		✓
	Pawl: Spring	Corrosion: stretch		✓
Hook		Chemical damage	✓	
		Deformation	✓	
		Cracks (dye penetrant, magnetic particle, or other suitable detection method)		✓
Hook retaining members (Pins, Bolts, Nuts)		Not tight or secure		✓
Hook Latch		Damaged; does not close	✓	
Suspension Members (Sheaves, Hand-wheels, Chain attachments, Suspension bolts or pins)		Excessive wear		✓
		Cracks	✓	✓
Gears		Distortion		✓
		Broken or worn teeth		✓
		Cracks		✓
		Inadequate lubrication		✓
Load Block: Suspension housing		Distortion	✓	✓
		Cracks	✓	✓
Trolley: Supporting structure		Possible inability to continue supporting loads		✓
Bolts, Nuts, Rivets		Not tight or secure		✓
WARNING Label		Removed or illegible	✓	

HOOKS

WARNING

1. Any hook that requires replacement because of excessive bends, twists, or throat opening indicates abuse or overloading of the product. Therefore, other load-supporting components of the product should be inspected for possible damage when such conditions are found.
2. Never repair hooks by welding or reshaping. Heat applied to the hook will alter the original heat treatment of the hook material and reduce the strength of the hook.
3. Never weld handles or other attachments to the hook.

HOOK INSPECTION

Where applicable, inspect hooks and measure throat opening at least once a month. Between regular inspections check visually daily for deformation, distortion, twisting, damage and missing or damaged hook latches.

Hooks damaged from chemicals, deformations or cracks, or that have more than 10° twist from the plane of the unbent hook or excessive opening or seat wear, must be replaced. Also, hooks that are opened to the extent that the latch does not engage the tip must be replaced. See figure 1.

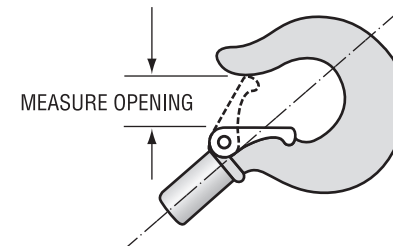


Figure 1 - Hook throat opening

Replace hook when opening is greater than	Hoist capacity (tonnes)
30mm	0.5
28mm	1
33.5mm	2
40mm	3
50mm	5
64mm	10
3.52in (89.4mm)	15
3.52in (89.4mm)	20
3.52in (89.4mm)	30

Note:

Top and Bottom Hooks have same dimensions.