

# Oz Blok



HOISTING  
EQUIPMENT  
SPECIALISTS

Quality Lifting and Rigging Solutions

31 Mangrove Lane Taren Point NSW 2229

PO Box 2066 Taren Point NSW 2229

Phone: 1300 792 464

Fax: 1300 309 041

Email: [sales@hesnsw.com.au](mailto:sales@hesnsw.com.au)

Web: [www.hesnsw.com.au](http://www.hesnsw.com.au)

## OPERATOR'S MANUAL

### LEVER HOIST 0.25 TONNE & 0.5 TONNE

# Oz Blok

These Lever Hoists  
meet or exceed  
the following  
standards:

CE

AS1418.2

ANSI B30.21

ANSI B30.16



# Oz Mechanical

[www.ozblok.com.au](http://www.ozblok.com.au)

**TABLE OF CONTENTS**

- WARRANTY POLICY** 3
- SAFETY INFORMATION** 3
- PRE-INSTALLATION INSTRUCTIONS** 4
- SAFETY PRECAUTIONS** 4
- INSPECTION AND MAINTENANCE** 5
- HOOKS** 7
- CHAIN** 8
- SPARE PARTS LIST** 9
- SPARE PARTS DRAWING** 10
- SERVICE NOTES** 11

---

---

---

---

---

---

---

---

---

---

---

---

---

---

---

---

---

---

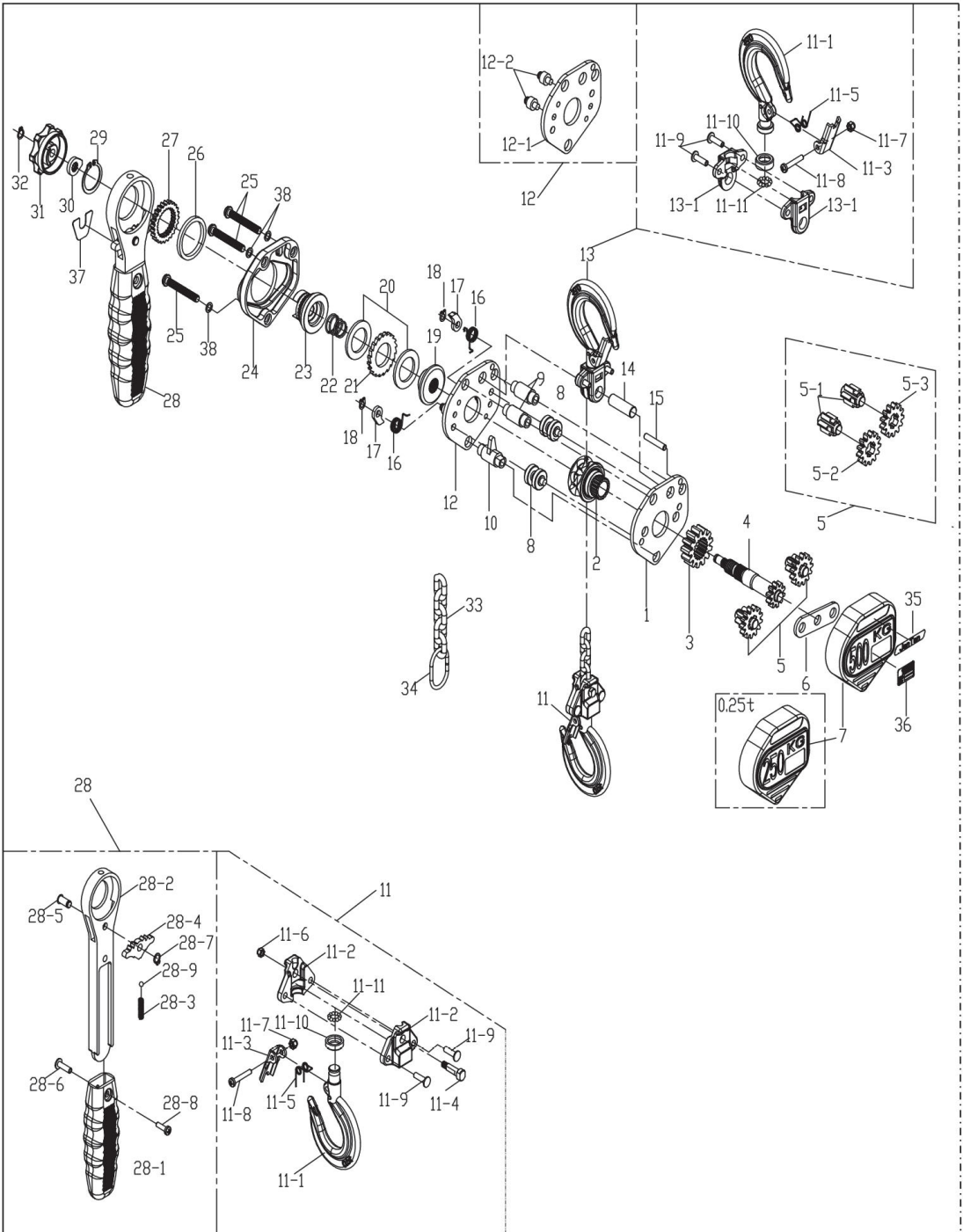
---

---

---

---

---



**ONE YEAR LIMITED WARRANTY**

OzBlok products are guaranteed to be free of defects in materials and workmanship. If one of these products fails during the first year of operation due to defective materials or workmanship it will be repaired or replaced at our discretion. Normal wear and tear of moving parts is excluded from this guarantee. This guarantee does not apply to any product showing signs of misuse, overloading, alteration or improper maintenance.

**WARRANTY POLICY**

Any product for which there is a warranty claim must be returned prepaid to an authorized OzBlok warranty depot along with proof of purchase.

For information on OzBlok products, please contact your local distributor:



31 Mangrove Lane Taren Point NSW 2229  
 PO Box 2066 Taren Point NSW 2229  
 Phone: 1300 792 464  
 Fax: 1300 309 041  
 Email: sales@hesnsw.com.au  
 Web: www.hesnsw.com.au

**SAFETY INFORMATION**

It is the responsibility of the owner/user to install, inspect, test, maintain, and operate these products in accordance with AS1418.2 standards.

These general instructions deal with the normal installation, operation and maintenance situations encountered with the products described herein.

This product should not be installed, operated or maintained by any person who has not read all the contents of these instructions. Failure to read and comply with these instructions or any of the warnings or limitations noted herein can result in serious bodily injury or death, and/or property damage.

Only trained and qualified personnel shall operate and maintain this equipment.

Equipment described herein is not designed for, and should not be used for lifting, supporting or transporting people.

Modifications to up-grade, re-rate or otherwise alter these products can only be authorized by the manufacturer.

## PRE-INSTALLATION INSTRUCTIONS

Check for damage during shipment. DO NOT install or use a damaged product. Check and verify any structure or other equipment that will support the product has a rated load capacity equal to or greater than the rated load capacity of the product to be used.

### OPERATION

Before initial operation:

1. Read and comply with all instructions and warnings furnished with or attached to the product if applicable.
2. Check lubricant.
3. Check operation of brake.
4. Where applicable, check that chain is properly seated in sheaves and that chain is not twisted, kinked or damaged.

Before each shift, where applicable:

1. Inspect hooks for nicks, gouges, cracks, and signs of pulling apart or twisting.
2. Inspect hook latch for proper operation.
3. Check chain for kinks or twists.
4. Check operation of brake.
5. Replace warning label if missing or illegible.

Before operating:

1. Be certain all personnel are clear of the load to be lifted and moved.
2. Make sure load will clear stock piles, machinery, or other obstructions when hoisting and travelling the load.

## SAFETY PRECAUTIONS

- READ** these instructions and relevant Australian Standard - AS1418.2 before installing, operating, or maintaining this equipment.
- WARN** personnel of approaching loads.

No.	Parts	No.	Parts
1	Left Side Plate Assembly	17	Pawl
2	Sprocket	18	Snap Ring $\phi 6$
3	Splined Gear	19	Brake Seat A
4	Pinion Shaft	20	Friction Disc
5	Disc Gear Assembly	21	Ratchet Disc
6	Reinforced Plate	22	Spring of Pinion Shaft
7	Gear Cover	23	Brake Seat B
8	Guide Roller	24	Hand Cover
9	Stay of Left Side Plate	25	Stay of Hand Cover M6*45mm
10	Stripper	26	Handle Sleeve
11	Bottom Hook Assembly	27	Change Over Gear
11-1	Bottom Hook	28	Handle Assembly
11-2	Hook Housing of Bottom Hook	28-1	Handle Sleeve
11-3	Safety Latch of Bottom Hook	28-2	Lever Handle Assembly
11-4	Suspension Pin of Bottom Hook	28-3	Spring of Change Over Pawl
11-5	Spring of Safety Latch of Bottom Hook	28-4	Change Over Pawl
11-6	Lock Nut of Hook Housing of Bottom Hook M6	28-5	Screw of Lever Handle M3.5
11-7	Lock Nut of Safety Latch of Bottom Hook M4	28-6	Screw of Handle Sleeve M3.5
11-8	Screw of Safety Latch of Bottom Hook M4*25mm	28-7	Ring of Change Over Pawl $\phi 6$
11-9	Screw of Hook Housing of Bottom Hook $\phi 5*18$ mm	28-8	Screw of Change Over Pawl M3.5*6mm
12	Right Side Plate Assembly	28-9	Ball of Spring of Change Over Pawl $\phi 4$
13	Top Hook Assembly	29	Snap Ring $\phi 29$
13-1	Top Hook	30	Stop Screw
13-2	Hook Housing of Top Hook	31	Hand Wheel
13-3	Safety Latch of Top Hook	32	Lock Nut M7
13-4	Spring of Safety Latch of Top Hook	33	Load Chain
13-5	Lock Nut of Safety Latch of Top Hook M4	34	End Anchor
13-6	Screw of Safety Latch of Top Hook M4*25mm	35	Name Plate A
13-7	Screw of Hook Housing of Top Hook $\phi 5*18$ mm	36	Name Plate B
14	Top Hook Pin	37	Destination Board
15	Stripper Pin	38	Ring of stay $\phi 6$
16	Pawl Spring		

## CHAIN

Inspect chain before each use. Between regular inspections, check visually daily for nicks, gouges, weld splatter, corrosion, or distorted links. Inspect chain thoroughly if it does not feed smoothly over load sheaves. Inspect as follows.

1. Clean chain before inspection.
2. Test hoist with load and observe operation of chain over load sheaves.
3. Slacken chain and inspect contact points for excessive wear. Refer to Figure 2.



Figure 2

### C. DO NOT, WHERE APPLICABLE:

1. Lift more the rated load.
2. Operate the product when it is restricted from forming a straight line with the direction of loading.
3. Operate with twisted, kinked or damaged chain.
4. Operate if chain is not seated in sheaves or sprockets.
5. Wrap chain around load or use chain as a sling.
6. Operate unless load is properly applied to the saddle or bowl of the hook.
7. Operate if load is applied to the tip of the hook.
8. Operate with damaged or missing hook latches.
9. Lift people or lift loads over people.
10. Operate with side-pulling or side-loading of load to hoist.
11. Operate a damaged or malfunctioning product.
12. Operate with other than hand power.
13. Remove, deface, or obscure warning label or labels.
14. Leave load suspended if unattended, unless specific precautions have been instituted.
15. Lengthen load chain or repair damaged load chain by welding.
16. Use chain as a ground for welding.

## INSPECTION AND MAINTENANCE

Prior to initial use, all new, modified and repaired products shall be inspected in accordance with Table 1. Thereafter, items to be inspected are indicated in Table 1 by F (Frequent) or P (Periodic).

**Frequent Inspections** - Visual inspection by the operator or other authorized person. This inspection includes listening for unusual sounds while the product is operated that may indicate deficiencies.

**Periodic Inspections** - Audible-visual inspection as for Frequent Inspections, with some disassembly to allow a more detailed inspection if external conditions indicate the need.

**Exception:** Brakes require more than audible-visual inspection. Check daily by operating the product with and without load, stopping at various positions to ensure safe operation.

**TABLE 1 - INSPECTION CHART**

In chart, F indicates Frequent Inspection, P indicates Periodic Inspection

LOCATION		CHECK FOR	F	P
Braking mechanism		Slipping under load	✓	
		Hard to release	✓	
Brake parts:	Brake Discs	Glazing		✓
		Oil contamination		✓
	Pawl: Ratchet	Excessive wear		✓
	Pawl: Spring	Corrosion: stretch		✓
Hook		Chemical damage	✓	
		Deformation	✓	
		Cracks (dye penetrant, magnetic particle, or other suitable detection method)		✓
Hook retaining members (Pins, Bolts, Nuts)		Not tight or secure		✓
Hook Latch		Damaged; does not close	✓	
Suspension Members (Sheaves, Hand-wheels, Chain attachments, Suspension bolts or pins)		Excessive wear		✓
		Cracks	✓	✓
Gears		Distortion		✓
		Broken or worn teeth		✓
		Cracks		✓
		Inadequate lubrication		✓
Load Block: Suspension housing		Distortion	✓	✓
		Cracks	✓	✓
Trolley: Supporting structure		Possible inability to continue supporting loads		✓
Bolts, Nuts, Rivets		Not tight or secure		✓
WARNING Label		Removed or illegible	✓	

**HOOKS**

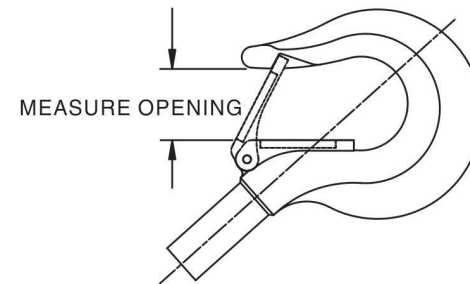
**WARNING**

1. Any hook that requires replacement because of excessive bends, twists, or throat opening indicates abuse or overloading of the product. Therefore, other load-supporting components of the product should be inspected for possible damage when such conditions are found.
2. Never repair hooks by welding or reshaping. Heat applied to the hook will alter the original heat treatment of the hook material and reduce the strength of the hook.
3. Never weld handles or other attachments to the hook.

**HOOK INSPECTION**

Where applicable, inspect hooks and measure throat opening at least once a month. Between regular inspections check visually daily for deformation, distortion, twisting, damage and missing or damaged hook latches.

Hooks damaged from chemicals, deformations or cracks, or that have more than 10° twist from the plane of the unbent hook or excessive opening or seat wear, must be replaced. Also, hooks that are opened to the extent that the latch does not engage the tip must be replaced. See figure 1.



Replace hook when opening is greater than	Hoist capacity (tonnes)
34mm	0.25
34mm	0.5

Figure 1 - Hook throat opening

**Note:** Top and Bottom Hooks have same dimensions.