

ABA 0,8t - lifting point for welding, loadable from any direction

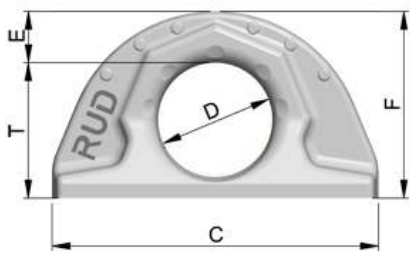


Weldable lifting point, full working load in all directions.

- Forged, no rattling noise or shaking even at strong vibrations or shock loads, simple connection of lifting means possible.
- Clear marking of the minimum WLL for all loading directions.
- Requirements of the DIN 18800 are fulfilled by the weld arrangement (circular fillet weld), this means non occurrence of contact/crevice corrosion due to the endless weld seam (therefore suitable for outdoor constructions). Material of weld-on-block 1.6541 (23MnNiCrMo52) (please observe user instruction).
- Patented markings for easy determination for withdraw of service.
- Tested and certified by DGUV, Testing specifications: GS-OA-15-04:2012-05, Certificate-Nr.: OA 1451020
- Phosphated surface.
- Significant product characteristics of the ABA are subject to property right claims.
- Simple and fast welding installation.
- Confirmation of the low temperature ability to -40°C by the notch bar impact test is possible upon request (before order is placed).
- The WLL statement corresponds to the minimum WLL in all loading directions. Higher WLL possible when location and installation is optimised (compare WLL chart / user instruction).

Welding should only be carried out by qualified persons according to ISO 9606-1. Other important RUD specific information and specialities to our RUD lifting points can be found in the specific user instruction.

ABA 0,8t - lifting point for welding, loadable from any direction



weight	0.20 kg	0.44 lbs
Nominal WLL	800 kg	1760 lbs
T	38 mm	1-1/2"
A	22 mm	7/8"
B	12 mm	15/32"
C	70 mm	2-3/4"
D	32 mm	1-1/4"
E	12 mm	15/32"
F	50 mm	1-31/32"

ABA 1,6t - lifting point for welding, loadable from any direction

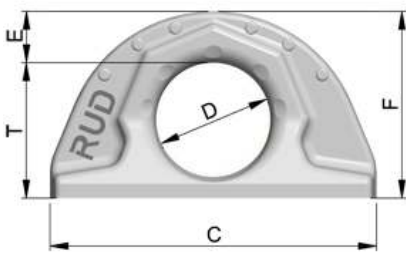


Weldable lifting point, full working load in all directions.

- Forged, no rattling noise or shaking even at strong vibrations or shock loads, simple connection of lifting means possible.
- Clear marking of the minimum WLL for all loading directions.
- Requirements of the DIN 18800 are fulfilled by the weld arrangement (circular fillet weld), this means non occurrence of contact/crevice corrosion due to the endless weld seam (therefore suitable for outdoor constructions). Material of weld-on-block 1.6541 (23MnNiCrMo52) (please observe user instruction).
- Patented markings for easy determination for withdraw of service.
- Tested and certified by DGUV, Testing specifications: GS-OA-15-04:2012-05, Certificate-Nr.: OA 1451020
- Phosphated surface.
- Significant product characteristics of the ABA are subject to property right claims.
- Simple and fast welding installation.
- Confirmation of the low temperature ability to -40°C by the notch bar impact test is possible upon request (before order is placed).
- The WLL statement corresponds to the minimum WLL in all loading directions. Higher WLL possible when location and installation is optimised (compare WLL chart / user instruction).

Welding should only be carried out by qualified persons according to ISO 9606-1. Other important RUD specific information and specialities to our RUD lifting points can be found in the specific user instruction.

ABA 1,6t - lifting point for welding, loadable from any direction



weight	0.45 kg	0.99 lbs
Nominal WLL	1600 kg	3520 lbs
T	42 mm	1-21/32"
A	30 mm	1-3/16"
B	16 mm	5/8"
C	100 mm	3-15/16"
D	35 mm	1-3/8"
E	16 mm	5/8"
F	57 mm	2-1/4"

ABA 1,6t - lifting point for welding, loadable from any direction

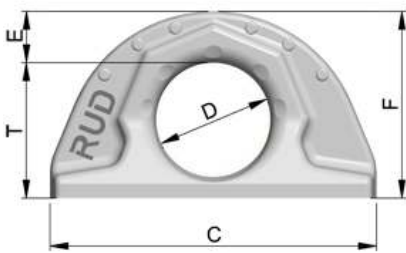


Weldable lifting point, full working load in all directions.

- Forged, no rattling noise or shaking even at strong vibrations or shock loads, simple connection of lifting means possible.
- Clear marking of the minimum WLL for all loading directions.
- Requirements of the DIN 18800 are fulfilled by the weld arrangement (circular fillet weld), this means non occurrence of contact/crevice corrosion due to the endless weld seam (therefore suitable for outdoor constructions). Material of weld-on-block 1.6541 (23MnNiCrMo52) (please observe user instruction).
- Patented markings for easy determination for withdraw of service.
- Tested and certified by DGUV, Testing specifications: GS-OA-15-04:2012-05, Certificate-Nr.: OA 1451020
- Phosphated surface.
- Significant product characteristics of the ABA are subject to property right claims.
- Simple and fast welding installation.
- Confirmation of the low temperature ability to -40°C by the notch bar impact test is possible upon request (before order is placed).
- The WLL statement corresponds to the minimum WLL in all loading directions. Higher WLL possible when location and installation is optimised (compare WLL chart / user instruction).

Welding should only be carried out by qualified persons according to ISO 9606-1. Other important RUD specific information and specialities to our RUD lifting points can be found in the specific user instruction.

ABA 1,6t - lifting point for welding, loadable from any direction



weight	0.45 kg	0.99 lbs
Nominal WLL	1600 kg	3520 lbs
T	42 mm	1-21/32"
A	30 mm	1-3/16"
B	16 mm	5/8"
C	100 mm	3-15/16"
D	35 mm	1-3/8"
E	16 mm	5/8"
F	57 mm	2-1/4"

ABA 5t - lifting point for welding, loadable from any direction

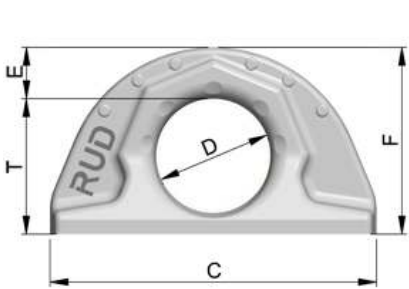


Weldable lifting point, full working load in all directions.

- Forged, no rattling noise or shaking even at strong vibrations or shock loads, simple connection of lifting means possible.
- Clear marking of the minimum WLL for all loading directions.
- Requirements of the DIN 18800 are fulfilled by the weld arrangement (circular fillet weld), this means non occurrence of contact/crevice corrosion due to the endless weld seam (therefore suitable for outdoor constructions). Material of weld-on-block 1.6541 (23MnNiCrMo52) (please observe user instruction).
- Patented markings for easy determination for withdraw of service.
- Tested and certified by DGUV, Testing specifications: GS-OA-15-04:2012-05, Certificate-Nr.: OA 1451020
- Phosphated surface.
- Significant product characteristics of the ABA are subject to property right claims.
- Simple and fast welding installation.
- Confirmation of the low temperature ability to -40°C by the notch bar impact test is possible upon request (before order is placed).
- The WLL statement corresponds to the minimum WLL in all loading directions. Higher WLL possible when location and installation is optimised (compare WLL chart / user instruction).

Welding should only be carried out by qualified persons according to ISO 9606-1. Other important RUD specific information and specialities to our RUD lifting points can be found in the specific user instruction.

ABA 5t - lifting point for welding, loadable from any direction



weight	2.26 kg	4.98 lbs
Nominal WLL	5000 kg	11000 lbs
T	72 mm	2-27/32"
A	51 mm	2"
B	27 mm	1-1/16"
C	172 mm	6-25/32"
D	60 mm	2-3/8"
E	28 mm	1-1/8"
F	99 mm	3-7/8"

ABA 10t - lifting point for welding, loadable from any direction

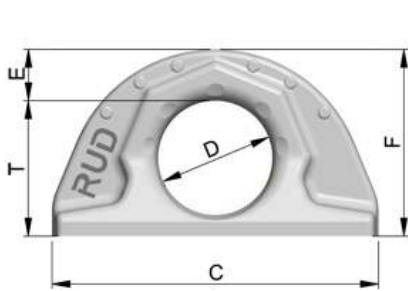


Weldable lifting point, full working load in all directions.

- Forged, no rattling noise or shaking even at strong vibrations or shock loads, simple connection of lifting means possible.
- Clear marking of the minimum WLL for all loading directions.
- Requirements of the DIN 18800 are fulfilled by the weld arrangement (circular fillet weld), this means non occurrence of contact/crevice corrosion due to the endless weld seam (therefore suitable for outdoor constructions). Material of weld-on-block 1.6541 (23MnNiCrMo52) (please observe user instruction).
- Patented markings for easy determination for withdraw of service.
- Tested and certified by DGUV, Testing specifications: GS-OA-15-04:2012-05, Certificate-Nr.: OA 1451020
- Phosphated surface.
- Significant product characteristics of the ABA are subject to property right claims.
- Simple and fast welding installation.
- Confirmation of the low temperature ability to -40°C by the notch bar impact test is possible upon request (before order is placed).
- The WLL statement corresponds to the minimum WLL in all loading directions. Higher WLL possible when location and installation is optimised (compare WLL chart / user instruction).

Welding should only be carried out by qualified persons according to ISO 9606-1. Other important RUD specific information and specialities to our RUD lifting points can be found in the specific user instruction.

ABA 10t - lifting point for welding, loadable from any direction



weight	5.37 kg	11.84 lbs
Nominal WLL	10000 kg	22000 lbs
T	95 mm	3-3/4"
A	70 mm	2-3/4"
B	38 mm	1-1/2"
C	228 mm	9"
D	80 mm	3-1/8"
E	35 mm	1-3/8"
F	130 mm	5-1/8"

ABA 20t - lifting point for welding, loadable from any direction

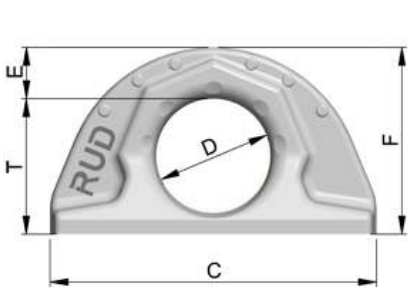


Weldable lifting point, full working load in all directions.

- Forged, no rattling noise or shaking even at strong vibrations or shock loads, simple connection of lifting means possible.
- Clear marking of the minimum WLL for all loading directions.
- Requirements of the DIN 18800 are fulfilled by the weld arrangement (circular fillet weld), this means non occurrence of contact/crevice corrosion due to the endless weld seam (therefore suitable for outdoor constructions). Material of weld-on-block 1.6541 (23MnNiCrMo52) (please observe user instruction).
- Patented markings for easy determination for withdraw of service.
- Tested and certified by DGUV, Testing specifications: GS-OA-15-04:2012-05, Certificate-Nr.: OA 1451020
- Phosphated surface.
- Significant product characteristics of the ABA are subject to property right claims.
- Simple and fast welding installation.
- Confirmation of the low temperature ability to -40°C by the notch bar impact test is possible upon request (before order is placed).
- The WLL statement corresponds to the minimum WLL in all loading directions. Higher WLL possible when location and installation is optimised (compare WLL chart / user instruction).

Welding should only be carried out by qualified persons according to ISO 9606-1. Other important RUD specific information and specialities to our RUD lifting points can be found in the specific user instruction.

ABA 20t - lifting point for welding, loadable from any direction



weight	10.72 kg	23.63 lbs
Nominal WLL	20000 kg	44000 lbs
T	135 mm	5-5/16"
A	90 mm	3-17/32"
B	52 mm	2-1/16"
C	272 mm	10-11/16"
D	115 mm	4-1/2"
E	40 mm	1-9/16"
F	175 mm	6-7/8"

ABA 31,5t - lifting point for welding, loadable from any direction

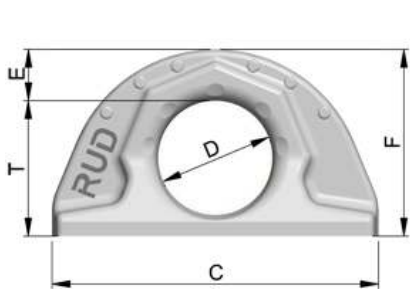


Weldable lifting point, full working load in all directions.

- Forged, no rattling noise or shaking even at strong vibrations or shock loads, simple connection of lifting means possible.
- Clear marking of the minimum WLL for all loading directions.
- Requirements of the DIN 18800 are fulfilled by the weld arrangement (circular fillet weld), this means non occurrence of contact/crevice corrosion due to the endless weld seam (therefore suitable for outdoor constructions). Material of weld-on-block 1.6541 (23MnNiCrMo52) (please observe user instruction).
- Patented markings for easy determination for withdraw of service.
- Tested and certified by DGUV, Testing specifications: GS-OA-15-04:2012-05, Certificate-Nr.: OA 1451020
- Phosphated surface.
- Significant product characteristics of the ABA are subject to property right claims.
- Simple and fast welding installation.
- Confirmation of the low temperature ability to -40°C by the notch bar impact test is possible upon request (before order is placed).
- The WLL statement corresponds to the minimum WLL in all loading directions. Higher WLL possible when location and installation is optimised (compare WLL chart / user instruction).

Welding should only be carried out by qualified persons according to ISO 9606-1. Other important RUD specific information and specialities to our RUD lifting points can be found in the specific user instruction.

ABA 31,5t - lifting point for welding, loadable from any direction



weight	18.33 kg	40.41 lbs
Nominal WLL	31500 kg	69300 lbs
T	154 mm	6-1/16"
A	108 mm	4-1/4"
B	64 mm	2-1/2"
C	320 mm	12-19/32"
D	130 mm	5-1/8"
E	50 mm	1-31/32"
F	204 mm	8-1/32"