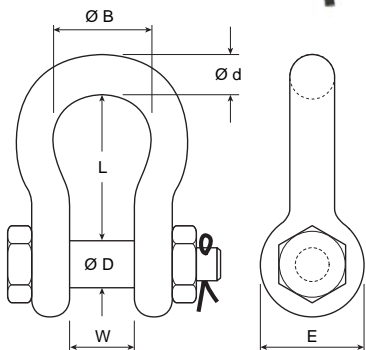
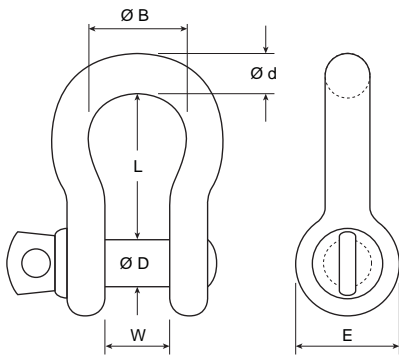


GRADE S SHACKLES

SSB/SSS SCREW & SAFETY PIN BOW SHACKLES

STANDARD FEATURES

- Titan shackles manufactured in accordance with AS2741-2002.
- All Titan shackles undergo a stringent quality control process by the manufacturer using ISO9000 and batch testing, as well as Titan Lifting Technologies' in-house QC process that includes batch proof/break testing and forging checks.
- All shackles are easily identified with markings such as Brand Name, W.L.L., Grade and Batch #. Pins are marked with T6 (Titan & Grade 6).
- All shackles are batch marked for traceability from manufacture to point of sale.
- Test and mill Certificates are available upon request.
- Suitable for all lifting applications in industries such as mining, resources and construction.
- Available in matt black finish for the entertainment industry in capacities 1t, 1.5t, 2t & 3.25t.
- Finish: HDG with yellow painted pins.
- Larger capacities subject to availability on request.



Bow Shackle Model	W.L.L.	d (mm)	D (mm)	W (mm)	L (mm)	B (mm)	E (mm)	Approx. Weight Ea	
								Screw Pin	Safety Pin
SSB0033	0.33	5	6	10	22	15	14	0.03	na
SSB/SSS005	0.05	6	8	12	29	20	17	0.05	0.06
SSB/SSS0075	0.75	8	10	13	31	21	21	0.09	0.1
SSB/SSS010	1	10	11	17	37	26	25	0.14	0.17
SSB/SSS015	1.5	11	13	18	43	29	27	0.2	0.24
SSB/SSS020	2	13	16	21	48	33	33	0.31	0.36
SSB/SSS032	3.25	16	19	27	61	43	40	0.60	0.69
SSB/SSS047	4.75	19	22	32	72	51	48	1	1.12
SSB/SSS065	6.5	22	25	37	84	58	54	1.6	1.7
SSB/SSS085	8.5	25	29	43	95	68	60	2.3	2.5
SSB/SSS095	9.5	29	32	46	108	74	67	3.2	3.45
SSB/SSS120	12	32	35	52	119	83	76	4.4	4.9
SSB/SSS135	13.5	35	38	57	133	92	84	5.8	6.4
SSB/SSS170	17	38	41	60	146	98	92	7.7	8.4
SSB/SSS250	25	44	51	73	178	127	110	13	14
SSB/SSS350	35	51	57	83	197	146	127	19	20
SSB/SSS550	55	65	69	104	263	-	-	37	39
SSB/SSS850	85	75	83	125	325	-	-	59	63

All Dimensions, d, D, W, L, B, E have a tolerance of +8% or -5% as stated in AS2741-2002. Unit weights should only be used as an approximate guide.