

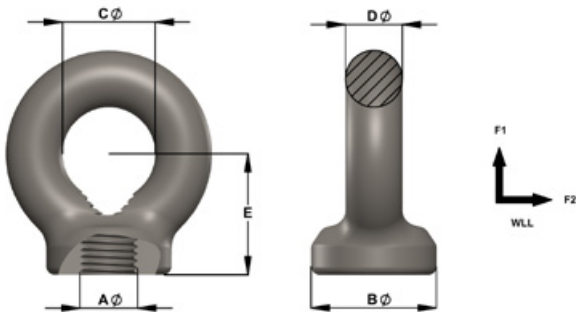
Collared Lifting Eyenuts AS2317

Product Description

- Manufactured using only heat certified Australian Steel
- Stamped WLL (F2)

Available on Request:

- Special Thread forms
- Hot Dip Galvanizing, Zinc Passivating, Chrome Plating, Powder Coating
- Conformance Certification
- Testing & Certification



Townley Drop Forge maintains a NATA Accredited Laboratory (Test Lab No. 13554) and an AS/NZS ISO9001 Certified QMS (Certificate number FS 604897)

Imperial Aø	Metric Aø	WLL F1	WLL F2	Bø	Cø	Dø	E	Net Weight (kg)
3/8"	M10	0.25t	0.06t	28	23.5	14	29	0.18
1/2"	M12	0.4t	0.1t	28	23.5	14	29	0.18
5/8"	M16	0.8t	0.2t	35	28	16	38	0.30
3/4"	M20	1.6t	0.4t	44	32	20	44	0.57
7/8"	M22	2t	0.5t	50	33	20	44	0.57
1"	M24	2.5t	0.62t	57	38	22	51	0.85
1 1/8"	M30	4t	1t	71	48	27	65	1.60
1 1/4"	M33	5t	1.25t	71	48	27	65	1.60
-	M36	6.3t	1.57t	87	53	35	73	2.80
1 1/2"	M39	7t	1.75t	87	53	35	73	2.80
1 3/4"	M42	8t	2t	102	66	40	90	4.90
2"	M48	10t	2.5t	115	72	49	99	9.50
2 1/4"	M56	15t	3.75t	143	95	56	124	19.50
2 1/2"	M64	20t	5t	143	95	56	124	19.50
3"	M76	30t	7.5t	163	106	66	140	29.00

WLL (WORKING LOAD LIMIT)

Each Eyebolt is clearly stamped with the permitted F2 WLL.

F2 WLL - indicates safe use for non-axial lifts.

F1 WLL - indicates loads which are in line with the axis of the threaded end of the eyebolt. F1 WLL allows up to four (4) times higher lifting capacity whilst maintaining a 6:1 design factor of safety.